

# HUA

newsletter  
June 2007

J-PARC HADRON HALL USERS' ASSOCIATION

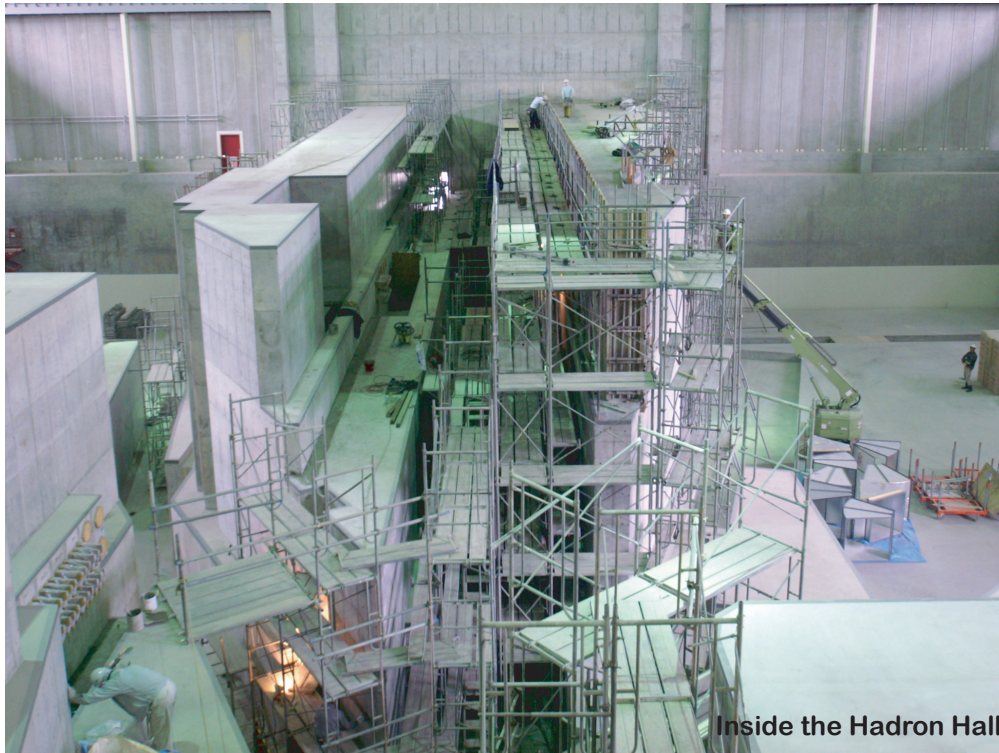
# FOUNDED

to exchange opinions and affect policy from the bottom-up,  
to promote science at the Hadron Hall, and  
to build good relations with the public



J-PARC Hadron Hall Users' Association on the internet  
<http://www.rcnp.osaka-u.ac.jp/~jparchua/>  
(We welcome people from overseas. An English version is being prepared.)





Inside the Hadron Hall

## J-PARC

J-PARC is a proton accelerator facility which will provide the world's highest beam power. It has three cascaded accelerators: the linac, the 3-GeV rapid-cycling synchrotron, and the 50-GeV synchrotron. There are three experimental facilities: the Materials and Life Science Facility (muons and neutrons, 3 GeV), the Neutrino Facility (50 GeV), and the Hadron Hall.

## HADRON HALL

The Hadron Hall is an experimental facility which utilizes slowly extracted proton beams from the 50-GeV synchrotron. During Phase-1 of J-PARC, the Hadron Hall will have a production target, T1, as well as secondary beam lines for intense pion and kaon beams. A primary beam line, which can be used for high momentum secondary beams, is also planned. Experiments using these pions and kaons as well as primary protons have been proposed, some of which have already been approved by the Program Advisory Committee. The scope of science to be conducted at the Hadron Hall is very wide, including hypernuclear spectroscopy, strangeness degree in nuclear matter, kaon rare decay, T violation, hadron spectroscopy, etc.

## FOUNDATION OF HUA

Potential users of the Hadron Hall met in Tokyo to found the Hadron Hall Users' Association (HUA) on March 25th, 2007. Members of the Users Executive Committee were elected in May, 2007.

## PURPOSE

HUA is composed of members who are interested in experiments at the Hadron Hall. The primary purpose of HUA is to allow users to exchange opinions and affect policy from the bottom-up, to achieve excellent scientific fruits, to promote science at the J-PARC Hadron Hall, and to build good relations with the public.



**Founders** *These people declared the foundation of the Hadron Hall Users' Association on March 25th, 2007, in Tokyo.*



**Overview of J-PARC** *The Hadron Hall is at the left of this photograph, indicated by the red rectangle.*



**Hadron Hall** *The civil construction of the Hadron Hall will be completed by the end of June, 2007. The left (large) building is the Hadron Hall, and the right (small) one is the beam dump.*

## HOW TO JOIN

If you are interested in performing experiments at the J-PARC Hadron Hall, please join us, and you can communicate actively with other users on the internet and at meetings.

Annual fee for membership is 2000 YEN for non-students, 1000 YEN for students enrolled in a doctor's course and free for students in a master's course. Please send your information to [hua-sec@rcnp.osaka-u.ac.jp](mailto:hua-sec@rcnp.osaka-u.ac.jp).

Be sure to include the following:

- 1) your name
- 2) job title
- 3) affiliation
- 4) office address
- 5) email address
- 6) telephone number

Thank you for your cooperation.

## VOICES (translated from Japanese)

Prof. Hirokazu Tamura, who is preparing one of the first experiments in the Hadron Hall, says "The foundation of HUA is an important step for us to perform experiments in the Hadron Hall. The ability of users to make proposals from a bottom-up basis is important for the research activity of experimental facilities such as J-PARC. Mutual information exchange and discussion among users are especially important. This time, an association which provides such occasion is founded. The researchers who work at the Hadron Hall, including me, can plan and propose an experiment more efficiently and actively."

Prof. Shoji Nagamiya, who is the Director of the J-PARC Center, says "It is excellent news that the users of the Hadron Hall have founded the Users' Association voluntarily. The J-PARC Center established the Users' Office in April of this year and is working hard to make preparations for users. We would like to find out what users really think and want through the Users' Consultative Committee and the Users' Association. In addition, we expect the cooperation between users and the J-PARC Center to achieve better experimental results."

## JOIN US

The first beam to the Hadron Hall is expected around the end of 2008. Time for excellent research activity is coming soon. Please join us.

**HUA**  
J-PARC Hadron Hall Users' Association  
<http://www.rcnp.osaka-u.ac.jp/~jparchua/>  
Email: [hua-sec@rcnp.osaka-u.ac.jp](mailto:hua-sec@rcnp.osaka-u.ac.jp)

**Executive committee**

NAGAE Tomofumi	(KEK)
NAKANO Takashi	(RCNP)
NAKAZAWA Kazuma	(Gifu Univ.)
OUTA Haruhiko	(RIKEN)
SASAO Noboru	(Kyoto Univ.)
SAWADA Shin'ya	(KEK)
TAMURA Hirokazu	(Tohoku Univ.)
YAMANAKA Taku	(Osaka Univ.)